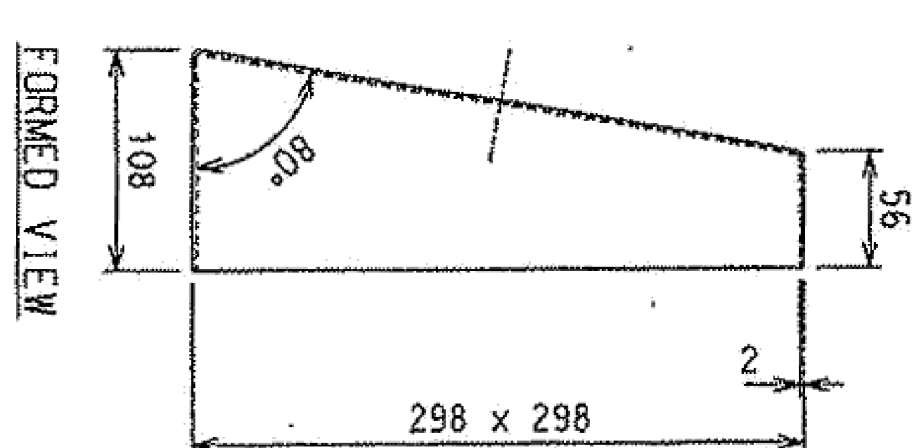
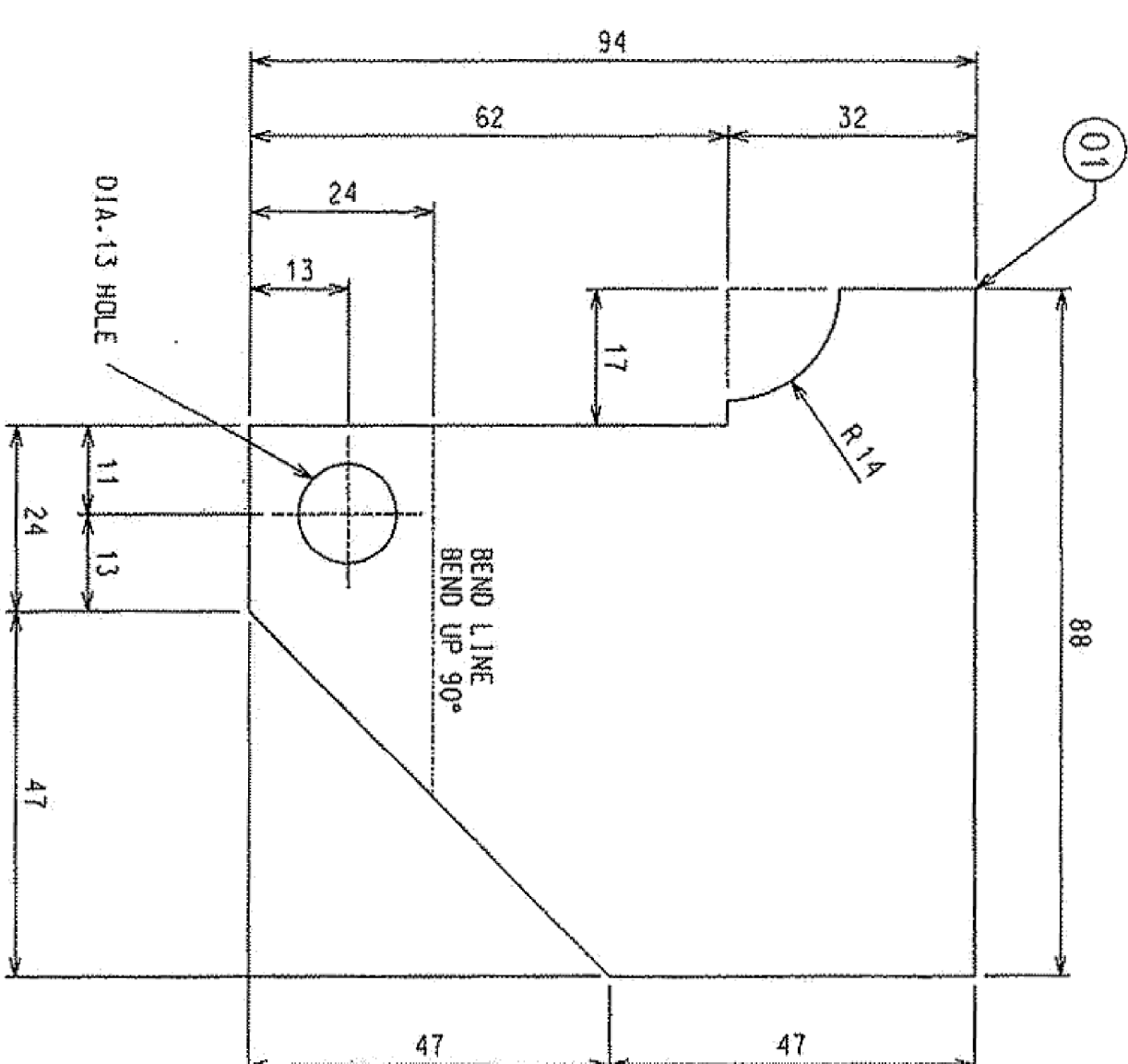
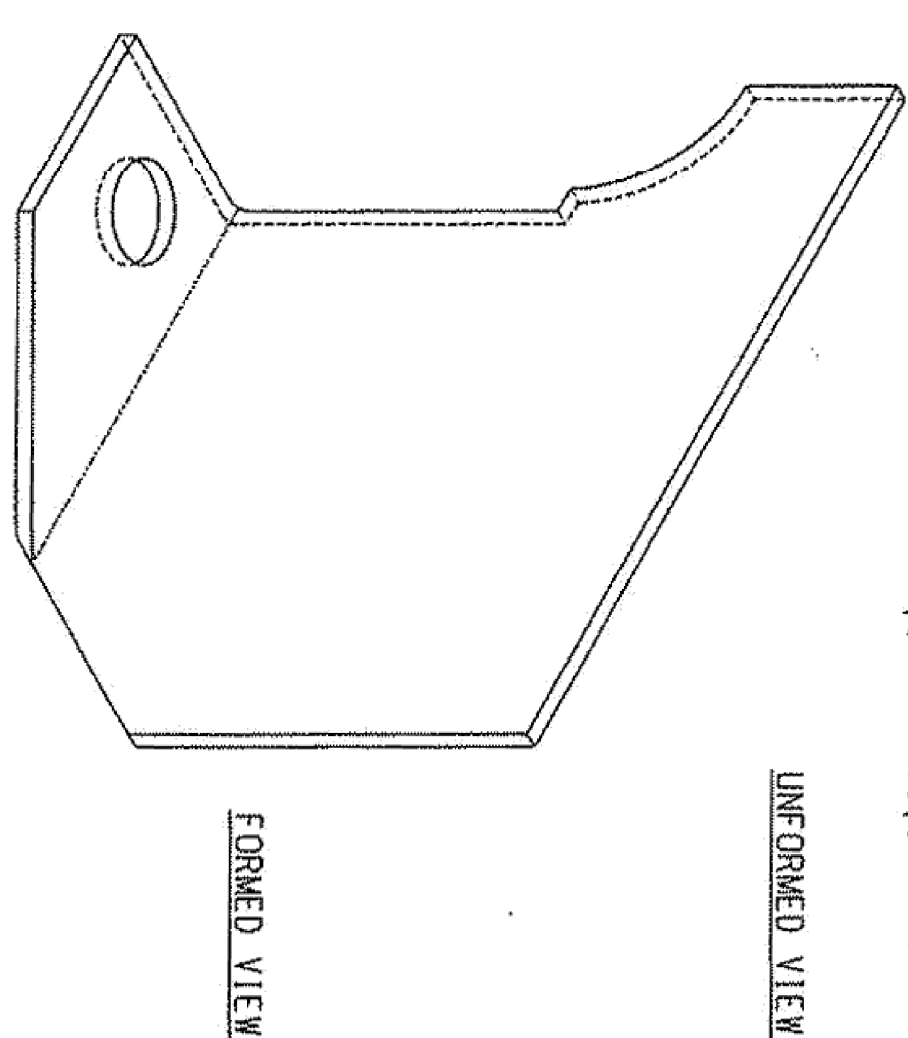
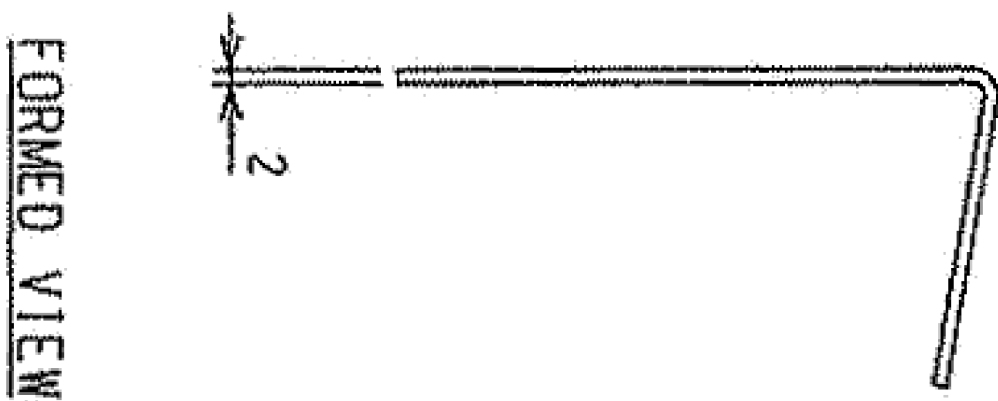
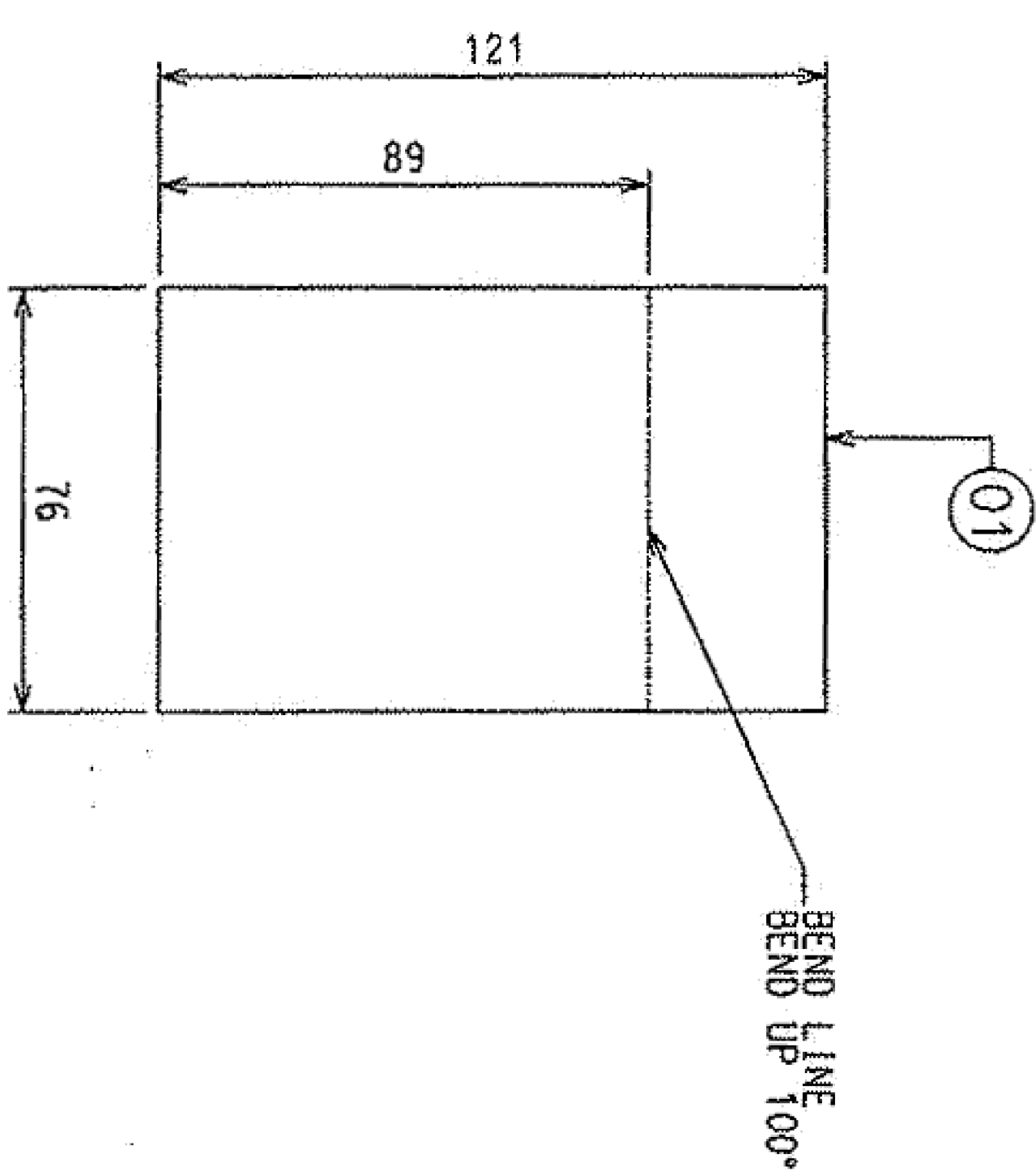


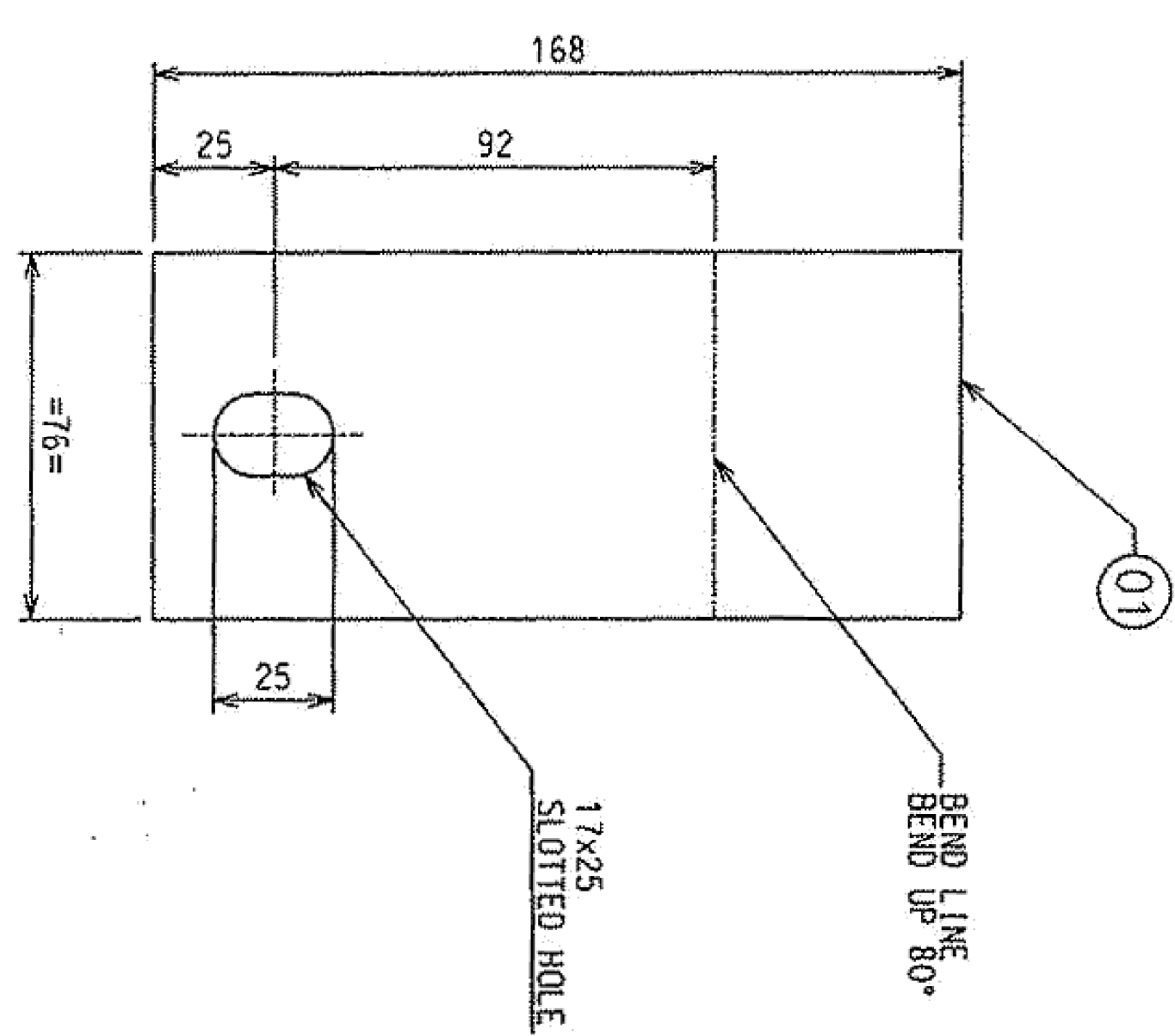


Technical drawing of a bent plate with dimensions and bend lines. The drawing shows a plate with a central rectangular section and two angled sections. Key dimensions and features include:

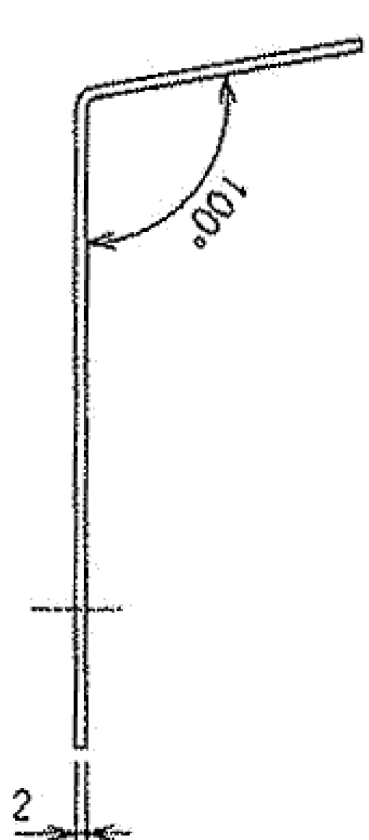
- Overall Dimensions:**
 - Top: 459 (total), 106 (left section), 299 (middle section), 54 (right section).
 - Left: 104 (top section), 147 (middle section), 147 (bottom section), 104 (bottom section).
 - Right: 29 (top section), 228 (CUT-OUT) (middle section), 89 (bottom section).
- Bend Lines:**
 - BEND LINE (BEND DOWN 90°) - Indicated by a line with a 90° angle.
 - BEND LINE (BEND DOWN 100°) - Indicated by a line with a 100° angle.
 - BEND LINE (BEND DOWN 50°) - Indicated by a line with a 50° angle.
- Other Features:**
 - 17 DIA. HOLE - Indicated by a circle with a crosshair.
 - 294 (TYP) - Dimension for the bottom angled section.
 - 106 (TYP) - Dimension for the bottom left section.
 - 54 (TYP) - Dimension for the bottom right section.
 - 10° - Angle for the bottom right section.
- Center Punch:** Indicated by a line pointing to the center of the plate.



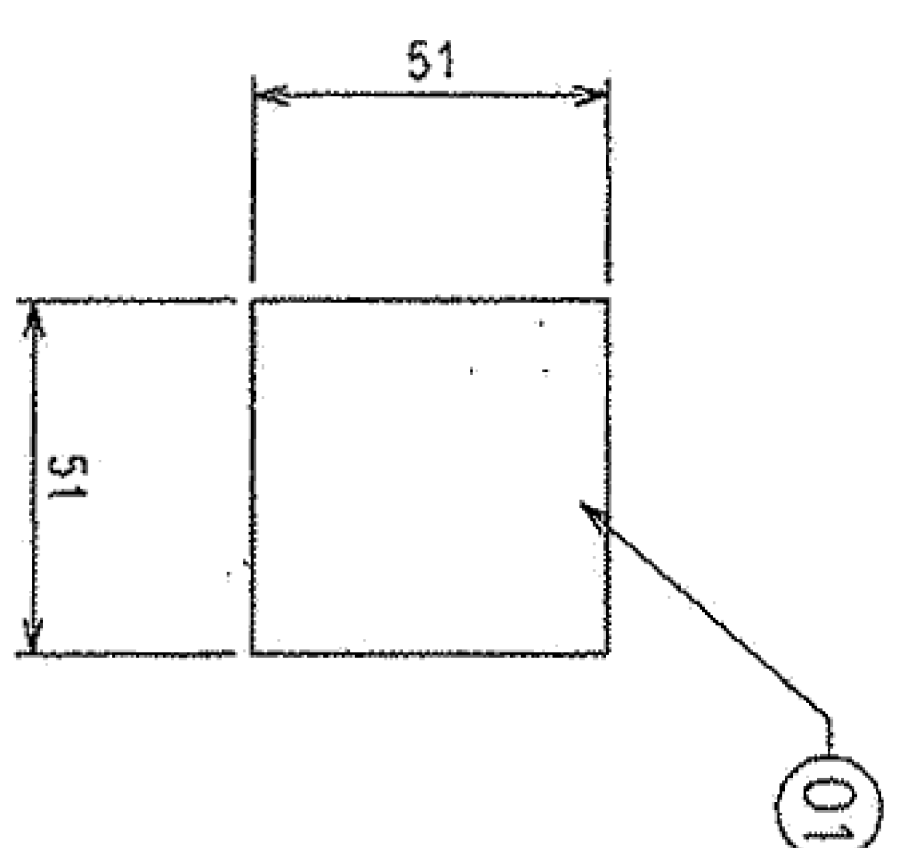
TK263-537-07-102



TK263-537-07-103



FORMED VIEW



TK263-537-07-106